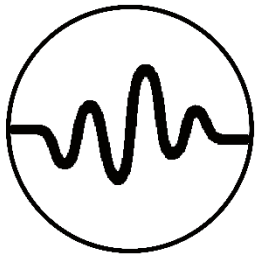


VENUE SPECS



STAIRWAY

Stairway is a midsize black box venue due to open in 2020. It's located in the district of Vanløse in Copenhagen.

In the following pages you'll find all you need to know about the venue but please don't hesitate to get in touch if you have any questions.

We are looking very much forward to the show!

Address

Lindehøjen 12
2720 Vanløse
Denmark

<https://goo.gl/maps/fQYxRPhZmZQcEFPX7>

Located right next to Vanløse Station - easy access to venue with Bus, Metro and S-train

Contact

stairway@kk.dk

Sound & Light

Thomas Taxvig
thomas@frommer.dk

Capacity

350 standing
180 seated

Stage size

8.8 x 3.7 x 0.5 meters

Clearance

Stage opening: 2.8 meters
Stage: 3.1 meters
Audience: 3.7 meters

Load in

Lift from parking garage

Parking

Free parking in parking garage under the venue
Note max height 2.25 meters

Nightliner and cars > 2.25 meters

Let us know in advance

Stagehands

No stagehands unless agreed upon with venue

Backstage facilities

One (1) lockable dressing room to share for main and support band

One (1) toilet

Shower: Let us know in advance

Access to stage directly from dressing room

Catering

Buy-out

WIFI

"Publikum"

Merchandise

Merchandise area is located at the entrance

Table, lights and hangers are available

Risers and barriers

No and no

Payment

NO CASH PAYMENT! Transfer only!

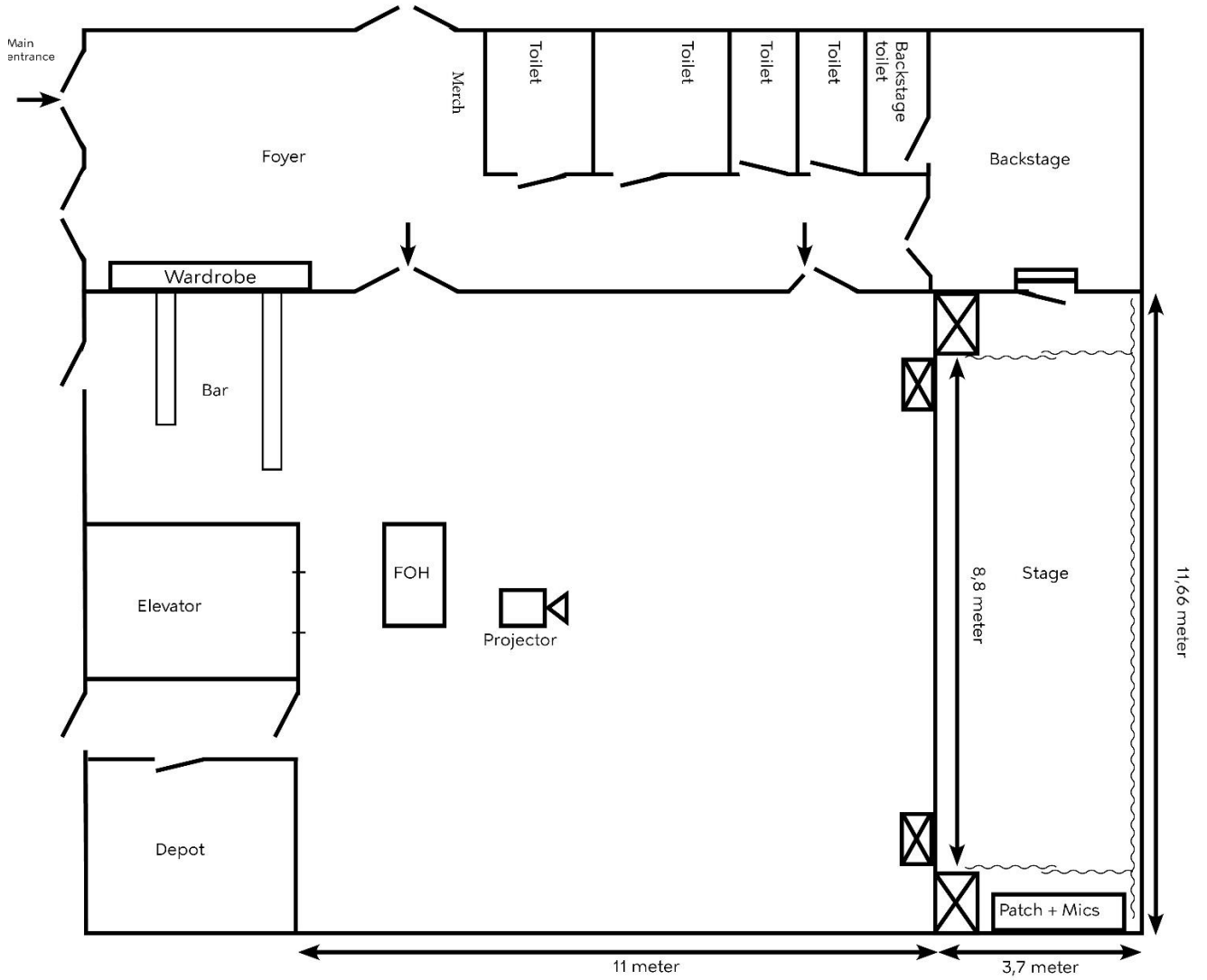
For Danish transactions:

EAN nr.: 5798009780690

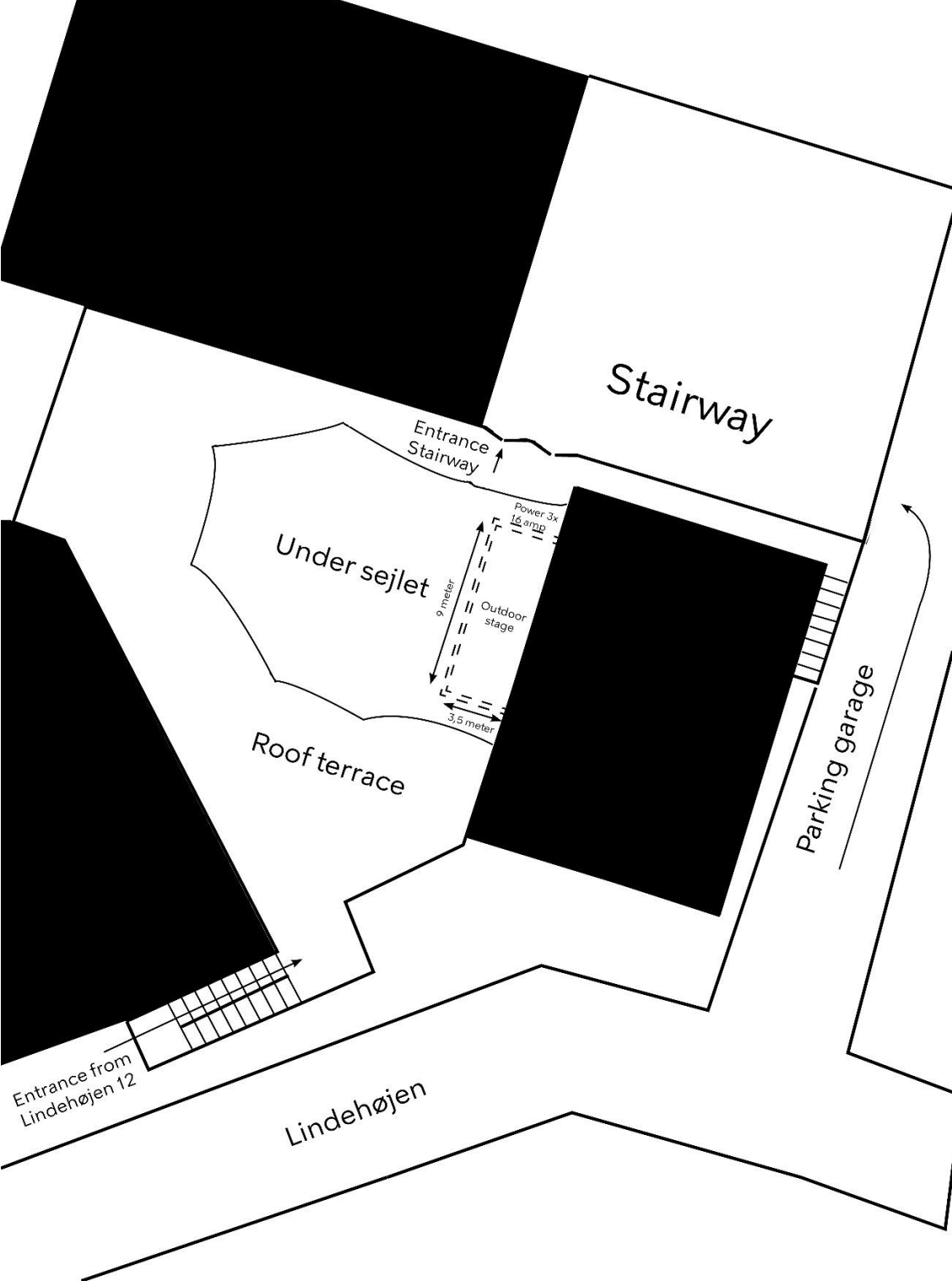
Personreference/Brugerident: G94J

CVR: 64942212

VENUE



OUTDOOR PLAN



AUDIO

PA

L'Acoustics Arcs Wide II Tops - 2 per side, Flown
L'Acoustics SB18 Subs - 3 per side, Stacked (Cardioid)
L'Acoustics MTD115a Frontfill - 1 per side
L'Acoustics LA8 Amps

Mixer

Midas M32 Desk
Midas DL251 Stagebox
Digital Multicore
Analog Patchbay on stage

Monitors

D-Pac 152 Wedges (6 wedges on 4 sends)
Powersoft Digam Q4004 Amps
XTA 428 Processor

DI boxes

Klark Teknik DN100 x6
LD Systems LDI02 x4

Microphones

Beyer Dynamic M88
Shure Beta 91
Shure Beta 52
Shure Beta 56
Shure Beta 57
Shure SM57 x4
Shure SM58 x4
Shure Beta 58 x4
Sennheiser e604 x4
Sennheiser e609 x2
Røde NT5 x4?

Microphone Stands

13 Large Tripod
5 Small Tripod
6 Small with Round Base

BACKLINE

The following Backline is available for all artists visiting Stairway. Please let us know if you wish to use it, to make sure that everything is available and in working condition on showday.

Drums

Complete Drum Kit - Pearl Vision Birch
20" Kick
10+12+14" Toms
14" SensiTone Snare

Anatolian Ambient Cymbals

14" Hi-Hat
16" Crash
20" Ride

Hardware

Kick Pedal
Snare Stand
Hi-Hat Stand
Cymbal Stand x3

Bass

Warwick Sweet 15.3 Combo
Warwick WA300 Top (300 Watts)
Warwick WCA410 Cabinet (4x10")

Guitar

Peavey Classic 50 Combo (4x10")
Fender Twin Combo (2x12")

Stands

There are currently no backline stands available at Stairway

DJ

There is currently no inhouse DJ gear at Stairway. It can be rented, as an artist cost

VIDEO

Projector

Hitachi CP-WX9210 with SD-903 Lens (8500 ANSI Lumen)

Screen

400x250 cm @ Backdrop

Connections

Video = HDMI @ Front Of House or Stage Left

Audio = Minijack-> XLR @ Front Of House or Stage Left

LIGHTS

Mixer

Avolites Titan Mobile with Touch PC

Front Lights

Osram Kreios 80WW LED Fresnel x8

Moving Lights

Chauvet Rogue R1X Wash x8

Blinders & Strobes

There are currently no Blinders or Strobes available at Stairway

FX

HazeBase Base Hazer Pro

Backdrop

Artist Backdrop can be mounted on truss. Clearance is approximately 2.70 meters

RIGGING

It is NOT possible to fly any extra equipment in the rig at Stairway, due to weight limitations.

Any external lights and screens must be placed on the floor.